

Have fun while learning



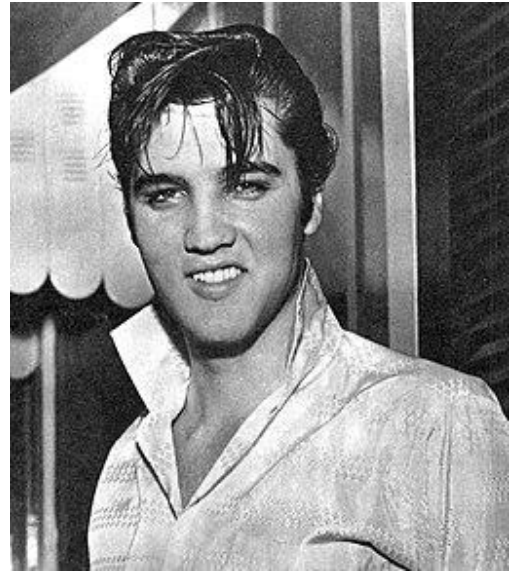
ALTERNATIVE GRAMMAR ACTIVITIES

Always on my mind by *Elvis Presley* *Modal Perfect A2*



Listen to the song and complete the lyrics

Maybe I didn't you
Quite as good as I should have
Maybe I didn't you
Quite as as I could have
Little things I should have and done
I just never the time
You were always on my mind
You were always on my mind
Maybe I didn't you
All those lonely, lonely
And I I never told you
I'm so happy that you're
If I made you feel best
Girl I'm so sorry, I was blind
You were always on my mind
You were always on my mind
Tell me
Tell me that your sweet hasn't died
Give me
Give me one more chance to you satisfied
Satisfied
Little things I should have and done
I just never the time
You were always on my mind



Read the lyrics again and underline the modal perfect verbs

Always on my mind by *Elvis Presley* *Modal Perfect A2 Teacher's*



Listen to the song and complete the lyrics

Maybe I didn't treat you
Quite as good as I **should have**
Maybe I didn't love you
Quite as often as I **could have**

Little things I **should have said and done**
I just never took the time
You were always on my mind
You were always on my mind

Maybe I didn't hold you
All those lonely, lonely times
And I guess I never told you
I'm so happy that you're mine

If I made you feel second best
Girl I'm so sorry, I was blind
You were always on my mind
You were always on my mind

Tell me
Tell me that your sweet love hasn't died
Give me
Give me one more chance to keep you satisfied
Satisfied

Little things I **should have said and done**
I just never took the time
You were always on my mind



Read the lyrics again and underline the modal perfect verbs





[Elvis Aaron Presley](#) (January 8, 1935 – August 16, 1977), known [mononymously](#) as **Elvis**, was an American singer and actor. Known as the "**King of Rock and Roll**", he is regarded as [one of the most significant cultural figures of the 20th century](#). Presley's energized interpretations of songs and sexually provocative performance style, combined with a singularly potent mix of influences across color lines during a [transformative era in race relations](#), brought both great success and [initial controversy](#). **(source Wikipedia)**

["Always on My Mind"](#) is a [ballad](#) written by [Wayne Carson](#), [Johnny Christopher](#), and [Mark James](#), first recorded by [Brenda Lee](#) and first released by [Gwen McCrae](#) (as "You Were Always on My Mind") in March 1972. Lee's version was released three months later in June 1972. The song has been a crossover hit, charting in both the [country and western](#) and [pop](#) categories. [Elvis Presley's](#) recording was the first commercially successful version of the song. **(source Wikipedia)**

Image credits

The image is in the public domain and it comes from Wikimedia Commons



Thank you for downloading my material! By downloading this you are agreeing that:

The content is the intellectual property of the website www.ruthlessteacher.com and its creator Charisi Giolanta and is protected by law. All the material in print or digital form is intended for personal educational use only. It may in no way be sold, traded, modified, transmitted and/or distributed in whole or in part, nor translated and adapted. Only fragmentary republishing of this educational material is permitted on other websites, provided it is always accompanied by the page name (Ruthless Teacher) and relevant hyperlinks redirecting to <http://ruthlessteacher.com/>. Retransmission and sharing of hyperlinks that lead to direct viewing and saving/downloading of the files is prohibited.

Major thanks to: Canva, Wikipedia, Pixabay, Pexels, Google Fonts

For any questions you may have you can message me at info@ruthlessteacher.com

Σας ευχαριστώ που κατεβάσατε το υλικό μου! Αυτόματα συμφωνείτε ότι :

Το περιεχόμενο αποτελεί πνευματική ιδιοκτησία του διαδικτυακού τόπου www.ruthlessteacher.com και της δημιουργού του Χαρίση Γιολάντας και προστατεύεται από τη νομοθεσία. Το εκπαιδευτικό υλικό σε εκτυπώσιμη ή ψηφιακή μορφή προορίζεται για προσωπική εκπαιδευτική χρήση μόνο. Δεν μπορεί σε καμία περίπτωση να αποτελέσει συνολικά ή εν μέρει αντικείμενο πώλησης, διαπραγμάτευσης, τροποποίησης, μετάδοσης ή/και διανομής με κάθε τρόπο. Επιτρέπεται σε άλλους διαδικτυακούς τόπους μόνο η αποσπασματική αναδημοσίευση εκπαιδευτικού υλικού, με την προϋπόθεση να συνοδεύεται πάντα από το όνομα της σελίδας (Ruthless Teacher) και τους σχετικούς υπερσυνδέσμους που ανακατευθύνουν στο <http://ruthlessteacher.com/>. Απαγορεύεται η αναμετάδοση και κοινοποίηση υπερσυνδέσμων που οδηγούν σε απευθείας προβολή και αποθήκευση/download των αρχείων.

Πολλά ευχαριστώ σε: Canva, Wikipedia, Pixabay, Pexels, Google Fonts

Για ο,τιδήποτε χρειάζεστε μπορείτε να επικοινωνήσετε μαζί μου στο info@ruthlessteacher.com

Follow me for more educational material-Ακολουθήστε με για περισσότερο υλικό

