



HALLOWEEN

 Activities

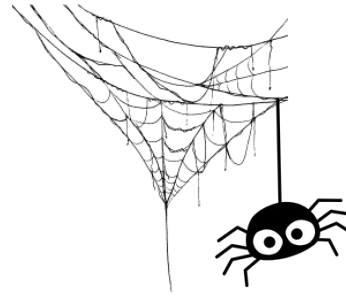


# "The pale blue eye" trailer C1-C2



Watch the video and answer the questions below:

<https://www.youtube.com/watch?v=dDbL9jvg77w>



1 What method does Detective Landor believe is effective in eliciting a confession from a suspect?

2 What gruesome discovery was made regarding the dead body?

3 What disturbing elements does Poe encounter when he infiltrates the cadets?

4 According to Poe, why do the dead haunt the living?



Below you can read the summary of the film. Complete the text with the missing words:

detective gruesome suicide sinister poetry secrets despair literature twists nature

*The Pale Blue Eye* is a mystery thriller set in 1830, revolving around Augustus Landor, a retired \_\_\_\_\_, who is called upon to solve a \_\_\_\_\_ case at West Point Military Academy. A cadet is found dead in an apparent \_\_\_\_\_, but his heart is removed from his body after death, suggesting a more \_\_\_\_\_ motive. As Landor investigates, he enlists the help of a curious young cadet named Edgar Allan Poe, who has a fascination with death and \_\_\_\_\_. Together, they explore the dark underworld of the academy, uncovering disturbing \_\_\_\_\_ about the victim and other cadets. Poe's unique insights and poetic sensibilities guide Landor through the investigation, revealing themes of obsession, revenge, and \_\_\_\_\_. The film intertwines fact and fiction, with Edgar Allan Poe playing a central role before he becomes the famous writer of Gothic \_\_\_\_\_. The narrative is suspenseful, with unexpected \_\_\_\_\_ and eerie atmospheres, creating a haunting exploration of human \_\_\_\_\_. *The Pale Blue Eye* blends historical fiction with crime drama, offering both a psychological and emotional journey into the mysteries of death and justice.





**What elements did the director use to create an atmosphere of mystery and horror?**

**Choose a scene from the video and describe it. What were the reasons for your choice?**



**Read the text below and decide if the sentences on the next page are True or False. Correct the false ones:**

**Edgar Allan Poe** (1809-1849) was a pioneering figure in American literature, renowned for his mastery of Gothic fiction, poetry, and his invention of the detective story. Born in Boston, Poe faced a tumultuous upbringing; his parents died when he was young, and he was taken in by the wealthy Allan family, though his relationship with them was strained. Financial struggles and personal tragedies marked his life, including the death of his wife, Virginia Clemm, which deeply influenced his melancholic and macabre themes.

Poe's writing is distinguished by its exploration of the human psyche, particularly its darker aspects—obsession, madness, death, and guilt. His most celebrated poems, such as *The Raven* and *Annabel Lee*, delve into themes of lost love and eternal mourning, blending musicality with vivid, haunting imagery. Equally groundbreaking was his prose; his short stories like *The Tell-Tale Heart* and *The Fall of the House of Usher* are masterworks of psychological horror, characterized by their atmospheric tension and unreliable narrators.

Poe is also credited with laying the groundwork for the modern detective genre with *The Murders in the Rue Morgue*, introducing the concept of the analytical, genius detective. Despite his limited financial success during his lifetime, Poe's work has exerted an enduring influence on literature, inspiring countless writers and shaping the horror and mystery genres.

1. Edgar Allan Poe had a stable and happy childhood.
2. Poe is known for pioneering the detective genre in literature.
3. *The Raven* and *Annabel Lee* are examples of Poe's exploration of themes related to lost love.
4. Poe's most famous works were written in the form of novels.
5. His short stories, such as *The Tell-Tale Heart*, often feature unreliable narrators.
6. Poe achieved financial success and recognition during his lifetime.
7. *The Murders in the Rue Morgue* is considered one of the first detective stories.
8. Poe's writing often explored joyful and optimistic themes.
9. Personal tragedies, including the death of his wife, heavily influenced Poe's writing.
10. Poe's work has had a lasting influence on both horror and mystery genres.



**Have you ever read any story by Poe? Are you a fan of horror or crime literature? What is your favourite literature genre and why?**



# "The pale blue eye" trailer Teacher's C1-C2

## Answers for the video questions

- 1 Detective Landor believes that with enough patience, a suspect will often interrogate himself.
- 2 That his heart had been carved out from his chest.
- 3 Poe encounters blood, symbols, and rituals that suggest a quest for immortality
- 4 Because they are not loved enough by the living.

## Answers for the vocabulary exercise

**detective gruesome suicide sinister poetry secrets despair literature twists nature**  
*The Pale Blue Eye* is a mystery thriller set in 1830, revolving around Augustus Landor, a retired \_\_\_\_\_ detective \_\_\_\_\_, who is called upon to solve a \_\_\_\_\_ gruesome \_\_\_\_\_ case at West Point Military Academy. A cadet is found dead in an apparent \_\_\_\_\_ suicide \_\_\_\_\_, but his heart is removed from his body after death, suggesting a more \_\_\_\_\_ sinister \_\_\_\_\_ motive. As Landor investigates, he enlists the help of a curious young cadet named Edgar Allan Poe, who has a fascination with death and \_\_\_\_\_ poetry \_\_\_\_\_. Together, they explore the dark underworld of the academy, uncovering disturbing \_\_\_\_\_ secrets \_\_\_\_\_ about the victim and other cadets. Poe's unique insights and poetic sensibilities guide Landor through the investigation, revealing themes of obsession, revenge, and \_\_\_\_\_ despair \_\_\_\_\_. The film intertwines fact and fiction, with Edgar Allan Poe playing a central role before he becomes the famous writer of Gothic \_\_\_\_\_ literature \_\_\_\_\_. The narrative is suspenseful, with unexpected \_\_\_\_\_ twists \_\_\_\_\_ and eerie atmospheres, creating a haunting exploration of human \_\_\_\_\_ nature \_\_\_\_\_. *The Pale Blue Eye* blends historical fiction with crime drama, offering both a psychological and emotional journey into the mysteries of death and justice.

## Answers for the text

- 1 **False** – Poe had a difficult upbringing, with his parents dying when he was young and a strained relationship with his foster family.
- 2 **True** – Poe is credited with inventing the modern detective genre.
- 3 **True** – Both *The Raven* and *Annabel Lee* explore themes of lost love and mourning.
- 4 **False** – Poe is best known for his short stories and poems, not novels.
- 5 **True** – His stories, like *The Tell-Tale Heart*, often feature unreliable narrators.
- 6 **False** – Poe struggled financially throughout his life and only gained widespread recognition after his death.
- 7 **True** – *The Murders in the Rue Morgue* is one of the earliest examples of a detective story.
- 8 **False** – Poe's works often explored dark and melancholic themes, such as madness and death.
- 9 **True** – The death of his wife and other personal tragedies heavily influenced his writing.
- 10 **True** – Poe's influence is profound, particularly in the horror and mystery genres.



### **The film**

[\*The Pale Blue Eye\*](#) is a 2022 American [mystery thriller film](#) written and directed by [Scott Cooper](#), adapted from the [2006 novel of the same name](#) by [Louis Bayard](#). **(information from Wikipedia)**

### **The author**

[Edgar Allan Poe](#) (January 19, 1809 – October 7, 1849) was an American writer, poet, editor, and [literary critic](#) who is best known for his poetry and short stories, particularly his tales involving mystery and the [macabre](#). **(information from Wikipedia)**

### **The images**

The image used comes from the promotion of the film and the copyright belongs to the production company and the artists that have made them.





**Thank you for downloading my material! By downloading this you are agreeing that:**

The content is the intellectual property of the website [www.ruthlessteacher.com](http://www.ruthlessteacher.com) and its creator Charisi Giolanta and is protected by law. All the material in print or digital form is intended for personal educational use only. It may in no way be sold, traded, modified, transmitted and/or distributed in whole or in part, nor translated and adapted. Only fragmentary republishing of this educational material is permitted on other websites, provided it is always accompanied by the page name (Ruthless Teacher) and relevant hyperlinks redirecting to <http://ruthlessteacher.com/>. Retransmission and sharing of hyperlinks that lead to direct viewing and saving/downloading of the files is prohibited.

**Major thanks to:** Canva, Wikipedia, Pexels, Unsplash, Google Fonts

For any questions you may have you can message me at [info@ruthlessteacher.com](mailto:info@ruthlessteacher.com)

**Σας ευχαριστώ που κατεβάσατε το υλικό μου! Αυτόματα συμφωνείτε ότι :**

Το περιεχόμενο αποτελεί πνευματική ιδιοκτησία του διαδικτυακού τόπου [www.ruthlessteacher.com](http://www.ruthlessteacher.com) και της δημιουργού του Χαρίση Γιολάντας και προστατεύεται από τη νομοθεσία. Το εκπαιδευτικό υλικό σε εκτυπώσιμη ή ψηφιακή μορφή προορίζεται για προσωπική εκπαιδευτική χρήση μόνο. Δεν μπορεί σε καμία περίπτωση να αποτελέσει συνολικά ή εν μέρει αντικείμενο πώλησης, διαπραγμάτευσης, τροποποίησης, μετάδοσης ή/και διανομής με κάθε τρόπο. Επιτρέπεται σε άλλους διαδικτυακούς τόπους μόνο η αποσπασματική αναδημοσίευση εκπαιδευτικού υλικού, με την προϋπόθεση να συνοδεύεται πάντα από το όνομα της σελίδας (Ruthless Teacher) και τους σχετικούς υπερσυνδέσμους που ανακατευθύνουν στο <http://ruthlessteacher.com/>. Απαγορεύεται η αναμετάδοση και κοινοποίηση υπερσυνδέσμων που οδηγούν σε απευθείας προβολή και αποθήκευση/download αρχείων.

**Πολλά ευχαριστώ σε:** Canva, Wikipedia, Pexels, Unsplash, Google Fonts

Για ο,τιδήποτε χρειάζεστε μπορείτε να επικοινωνήσετε μαζί μου στο [info@ruthlessteacher.com](mailto:info@ruthlessteacher.com)

**Follow me for more educational material-Ακολουθήστε με για περισσότερο υλικό**

